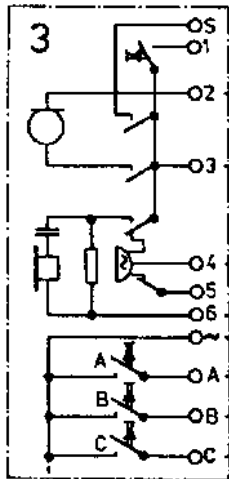
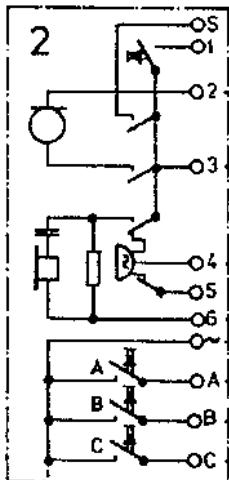


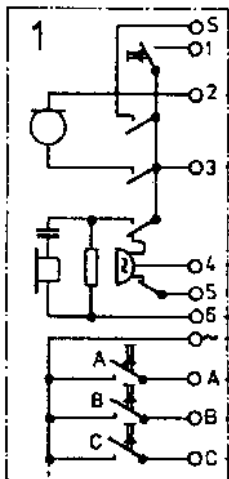
Wohnungs-
sprechstelle
6405



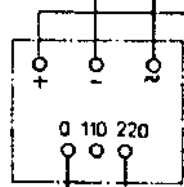
Wohnungs-
sprechstelle
6405



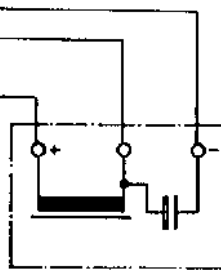
Wohnungs-
sprechstelle
6405



Netzgerät
5400

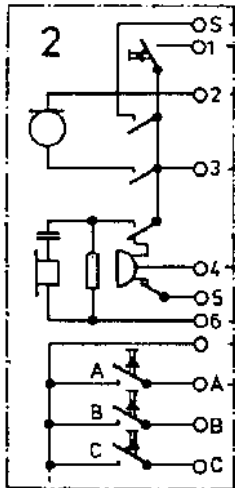


Speisedrossel
6940

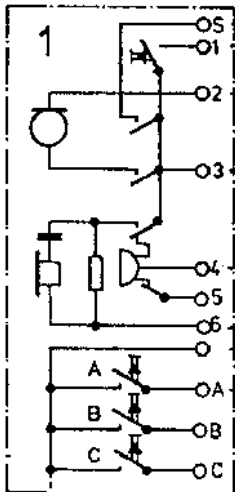


Netz

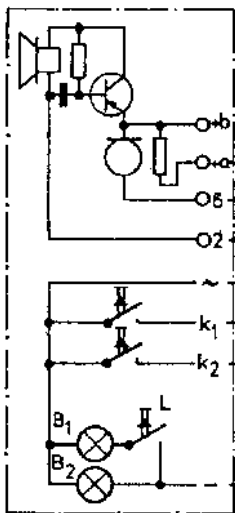
Wohnungs-
sprechstelle
6405



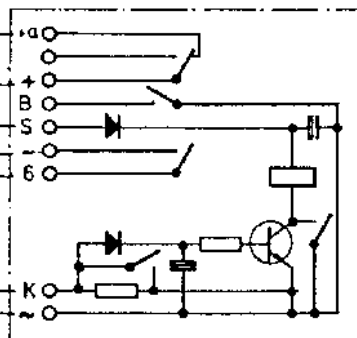
Wohnungs-
sprechstelle
6405



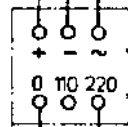
Türstation
59.../...



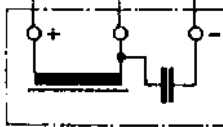
Umsteuergerät
6942



Netzgerät
5400



Netz



Speisedrossel
6940

- ED = Klingeldrucker Etagentür
- K₁ = Klingeldrucker Haustür
- TÖ = Türöffner 5 - 8 Volt
- B₁ = Birnchen im Lichtkontakt
12 V, 0.1 A
- L = Lichtkontakt
- LW = Zweitlautwerk, Etagenruf