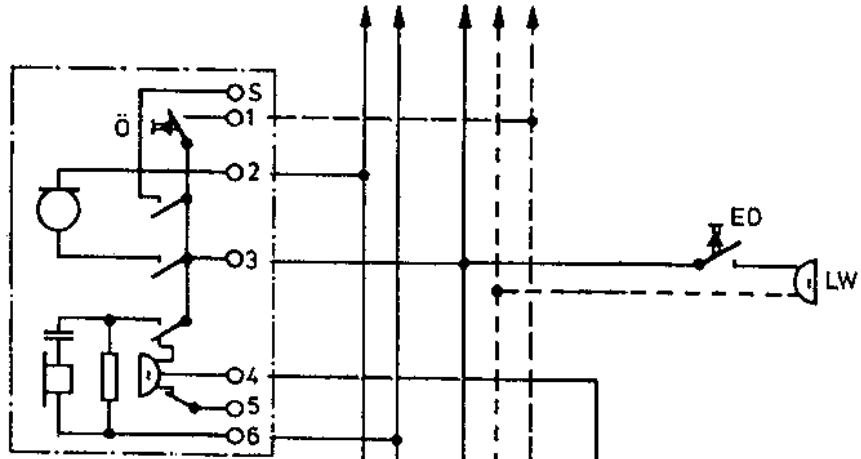
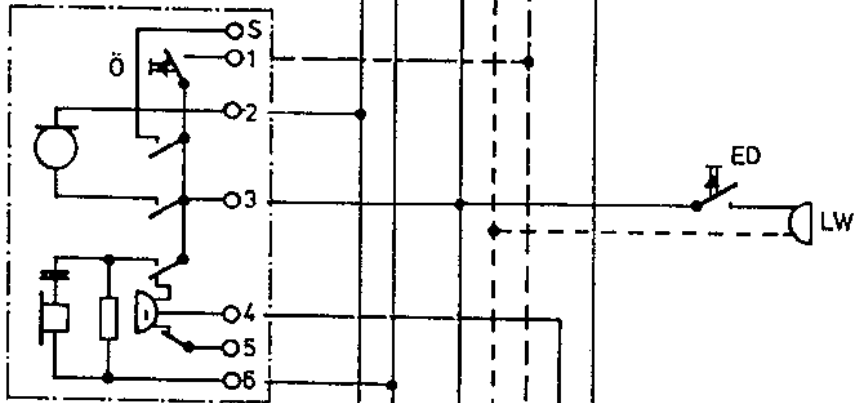


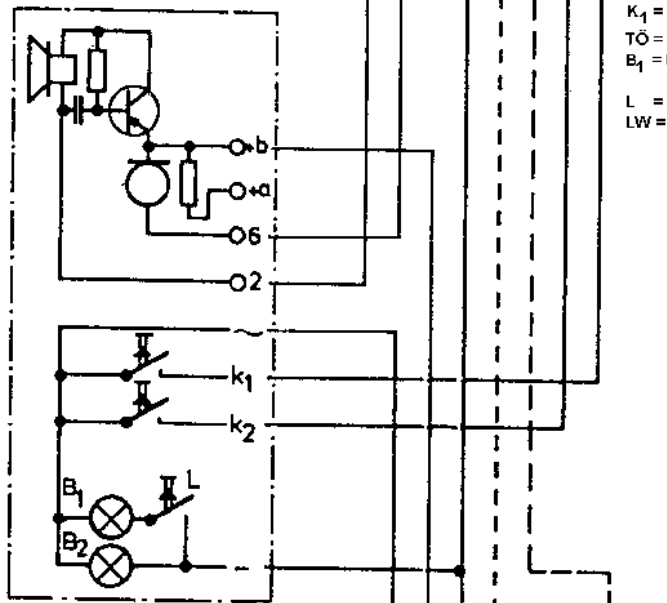
Wohnungs-
sprechstelle
6400



Wohnungs-
sprechstelle
6400

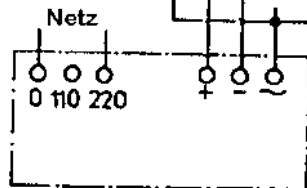


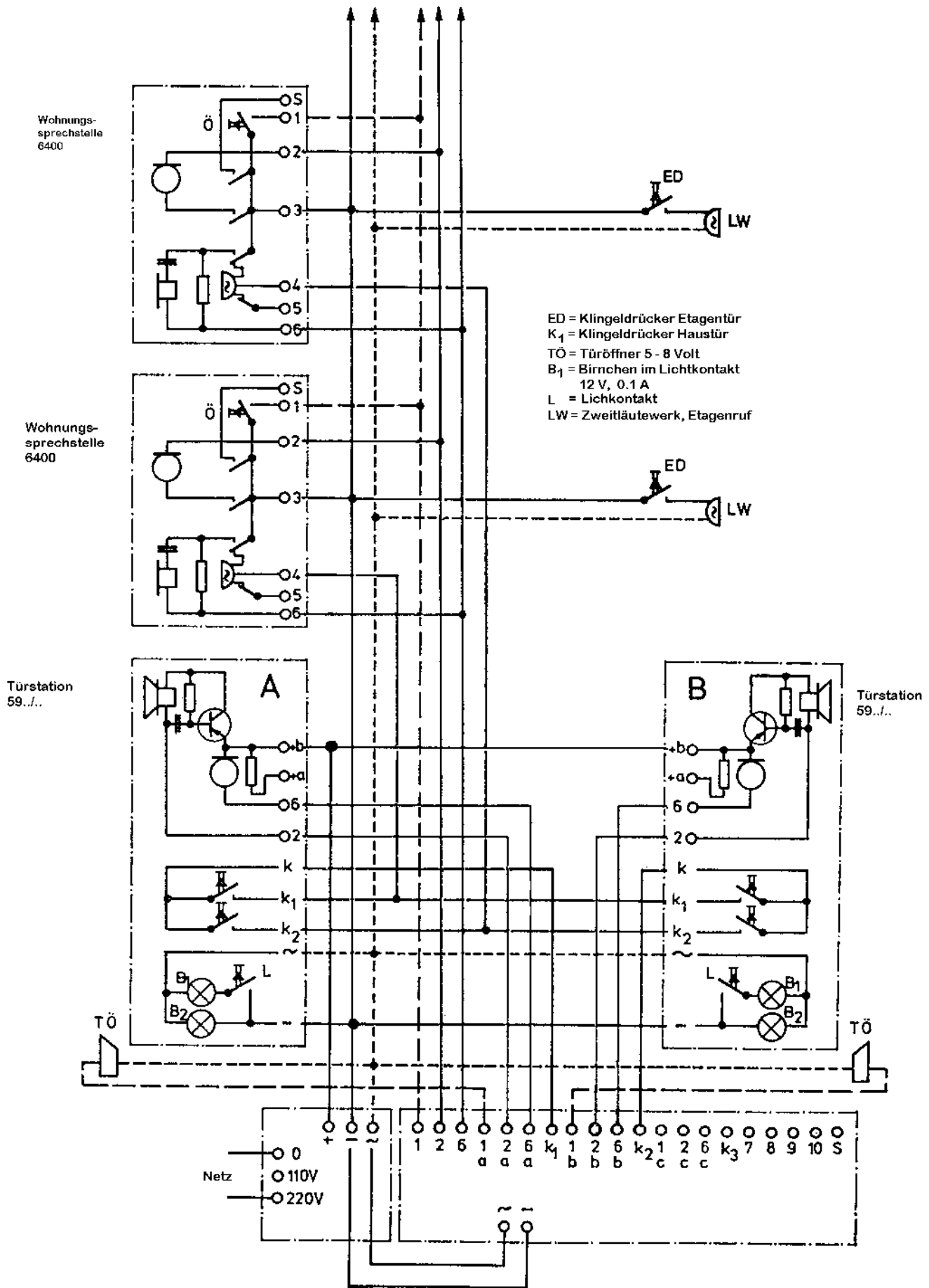
Türstation
59.../..



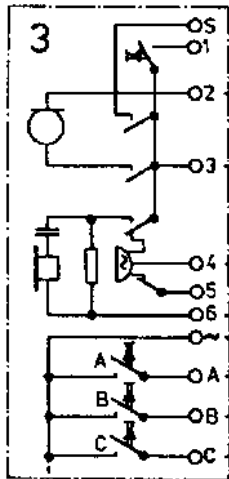
ED = Klingeldrucker Etagentür
 K₁ = Klingeldrucker Haustür
 TÖ = Türöffner 5 - 8 Volt
 B₁ = Birnchen im Lichtkontakt
 12 V, 0,1 A
 L = Lichtkontakt
 LW = Zweitläutwerk, Etagenruf

Netzgerät
5400

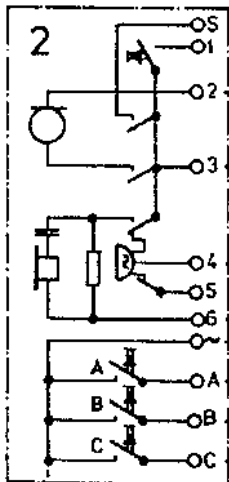




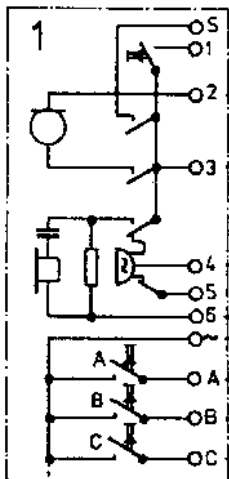
Wohnungs-
sprechstelle
6405



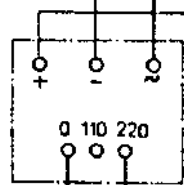
Wohnungs-
sprechstelle
6405



Wohnungs-
sprechstelle
6405

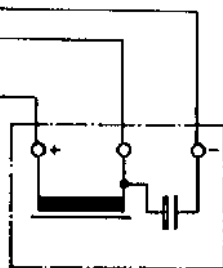


Netzgerät
5400

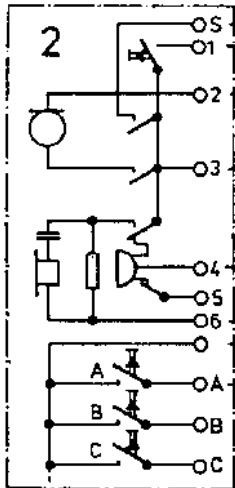


Netz

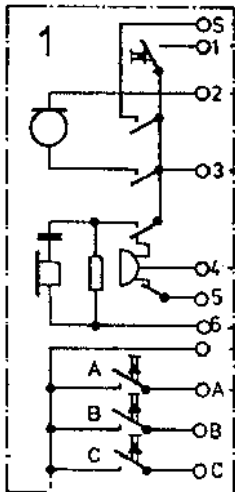
Speisedrossel
6940



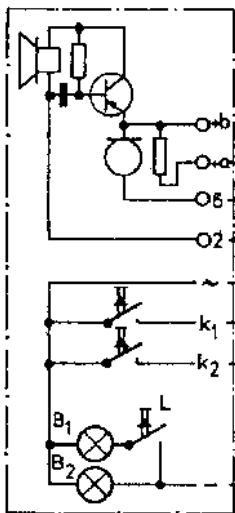
Wohnungs-
sprechstelle
6405



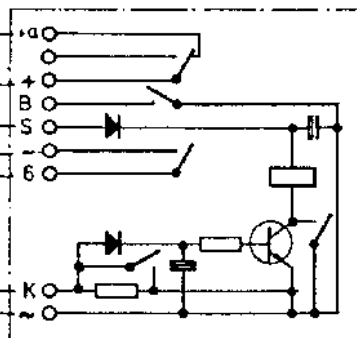
Wohnungs-
sprechstelle
6405



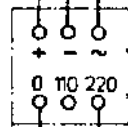
Türstation
59.../...



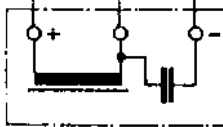
Umsteuergerät
6942



Netzgerät
5400



Netz



Speisedrossel
6940

- ED = Klingeldrucker Etagentür
- K₁ = Klingeldrucker Haustür
- TÖ = Türöffner 5 - 8 Volt
- B₁ = Birnchen im Lichtkontakt
12 V, 0.1 A
- L = Lichtkontakt
- LW = Zweitlautwerk, Etagenruf